

# Sectéra® Edge™ Administrator's Configuration Workstation Tool Kit

*Easier, Faster Setup and Deployment*



## *Simultaneously Configure up to 16 Sectéra Edge Devices*

Increase operator efficiency

Expedite device deployment

Prevents keyboard entry errors

Reduces lifecycle costs

## Overview

The Configuration Workstation Tool Kit is a software tool that enables administrators to configure and update software on up to 16 Sectéra Edge Smartphone (SME PED) devices simultaneously. Using this tool kit to automate the configuration and software update process not only saves time and can prevent potential errors that may occur from manual configuration, it also minimizes the risk of overlooking necessary configuration parameters. The Configuration Workstation Tool Kit simplifies the process of deploying Sectéra Edge devices to your critical users and significantly saves labor costs.

## Applications

The Configuration Workstation Tool Kit enables users to easily access and configure the following parameters:

- Create admin and user accounts
- Set SCIP settings for secure voice
- Configure classified PDA settings
- Classified USB port settings
- Quickly and easily set HAIPE® configurations
- Update Edge PDA and security software
- Clone Edge configurations for use on multiple units

# Sectera® Edge™ Administrator's Configuration Workstation Tool Kit

## Easy to Use

The Configuration Workstation Software Tool Kit runs on a standard PC. Simply connect the Sectera Edge device to the PC using a software update cable or connect multiple Edge devices using a serial port expander. The Backup and Restore functionality allows users to simply save settings prior to updates and restore files upon completion.

## Faster Deployment

Your time is critical. Using the Configuration Workstation Tool Kit, you can configure up to eight Sectera Edge devices at once in approximately the same time it would take to configure one unit manually. Coupled with the new Sectera Edge Backup and Restore functionality, the Configuration Workstation Tool Kit dramatically cuts down labor time and costs spent on administration of the Edge devices.

## System Requirements

- 100 MHz processor
- 3 MB free disk space
- 16 MB RAM
- A serial (COM) port for each unit being configured
- Ability to read the media containing the PC Updater information (CD-ROM, internet access, etc.)
- Microsoft® Windows® XP

## Included in the Tool Kit

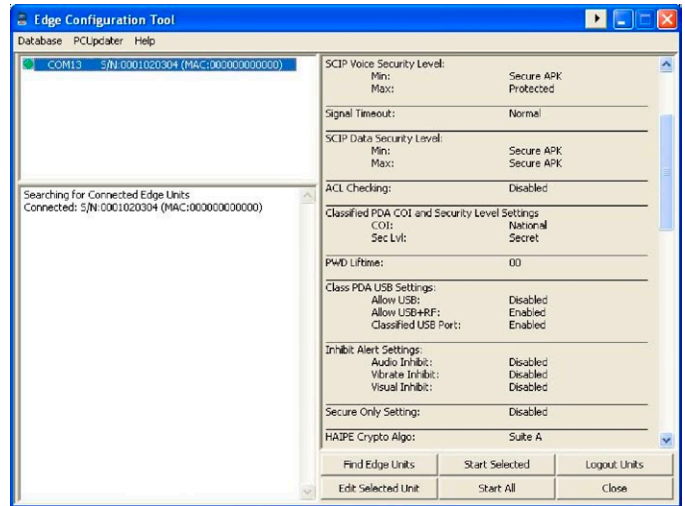
- Configuration software
- 16 cables for simultaneously configuring 16 Edge devices
- 2 USB-to-RS232 adapter/hubs

## Price

\$1,995.00

## Availability

The Configuration Workstation Software Tool Kit is available now and is compatible with Sectera Edge release 2.3.



## GENERAL DYNAMICS

C4 Systems

*Secure Communications: We Bring You What's Next*

INFOSEC 77 A Street, Needham, MA 02494-2806 USA • [www.gdc4s.com/secureproducts](http://www.gdc4s.com/secureproducts)

Phone: 781-455-2800 • Toll-free: 888-Type1-4-U (888-897-3148) • Fax: 781-455-5555 • E-mail: [infosec@gdc4s.com](mailto:infosec@gdc4s.com)

© 2010 General Dynamics. All rights reserved. Sectera and Edge are trademarks of General Dynamics. HAIPE is a registered trademark of the National Security Agency. All other product and service names are the property of their respective owners. © Reg. U.S. Pat. & Tm. Off. General Dynamics reserves the right to make changes in its products and specifications at anytime and without notice.



D-EDGECW-3-0910